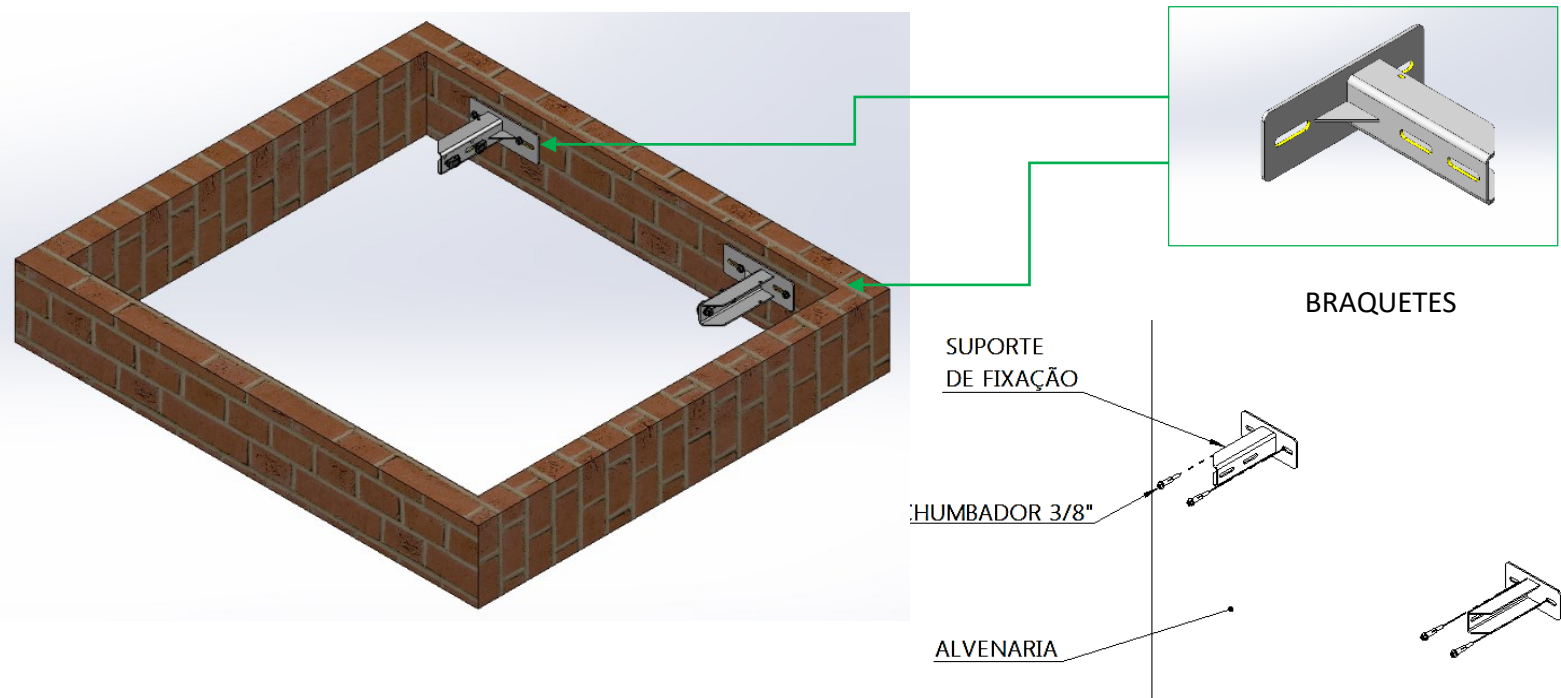


PASSO A PASSO:

- 1° posicionamento dos braquetes na caixa de corrida;
- 2° instalar a base do apoio do cilindro;
- 3° instalar guias;
- 4° instalar calço do cilindro;
- 5° posicionar cilindro e fixar as travessas do cilindro;

1° Instalar os braquetes iniciais na caixa de corrida, posicionando conforme imagem a seguir. A distância na vertical (altura) entre um suporte e outro pode variar de acordo com a disponibilidade das vigas de concreto na parede, conforme indica o Projeto Executivo da obra.

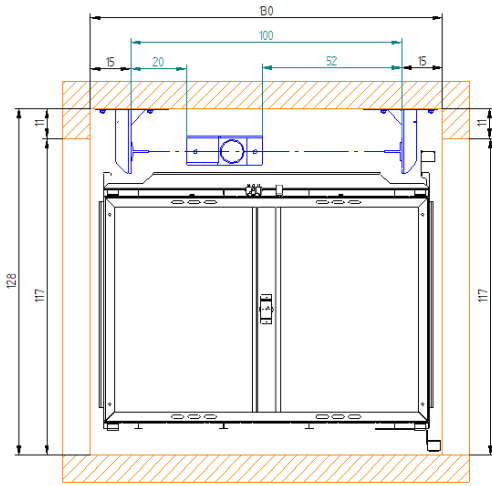


Importante!

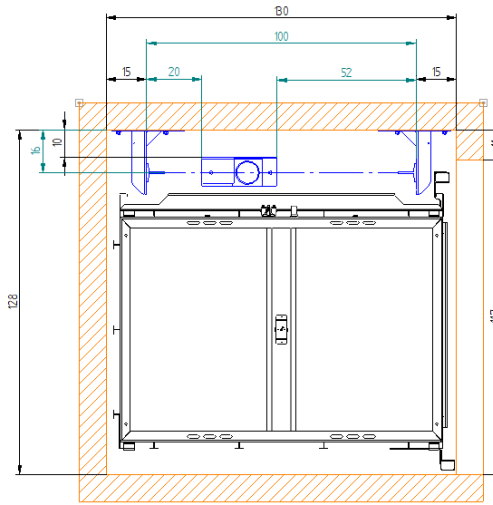
Verificar as distâncias na imagem a seguir em relação ao tamanho da base, caixa de corrida e vão de porta (boneca). ARQUIVO CAD AC08 2024 / AC11 2024.

O tamanho da caixa de corrida corresponde ao tamanho mínimo recomendado, leve em consideração a distância entre braquetes.

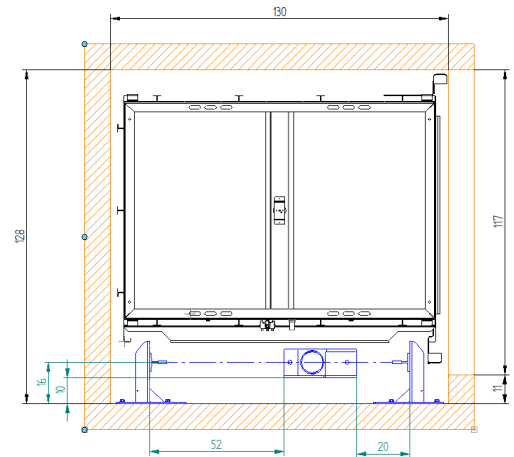
AC08 800X1200mm



BONECAS DE PORTA LATERAL DIREITA/ESQUERDA
AC08 800X1200mm 180°

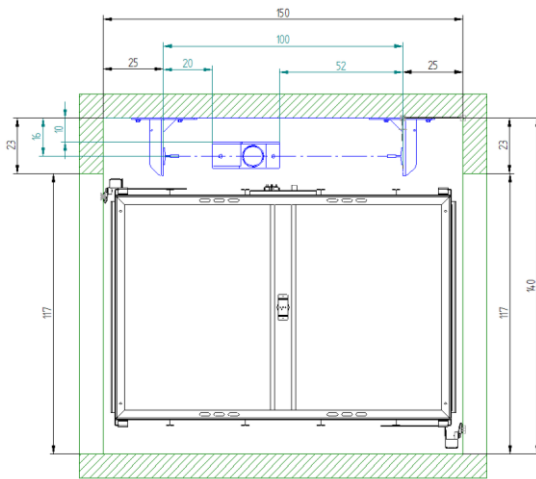


BONECAS DE PORTA LATERAL DIREITA
AC08 800X1200mm 360° LATERAL

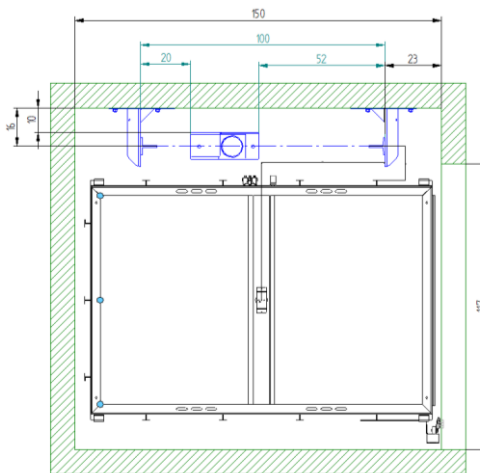


BONECAS DE PORTA LATERAL ESQUERDA
AC08 800X1200mm 360° LATERAL

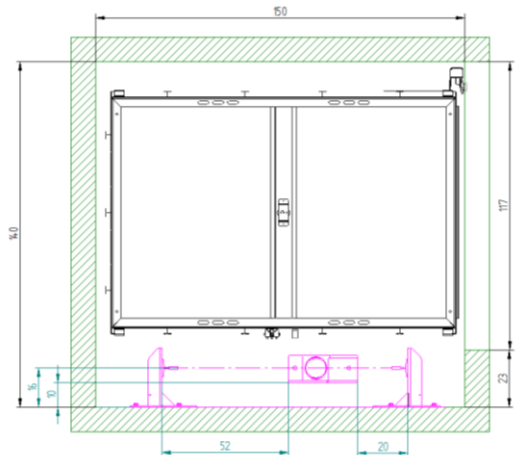
AC08 900X1400mm



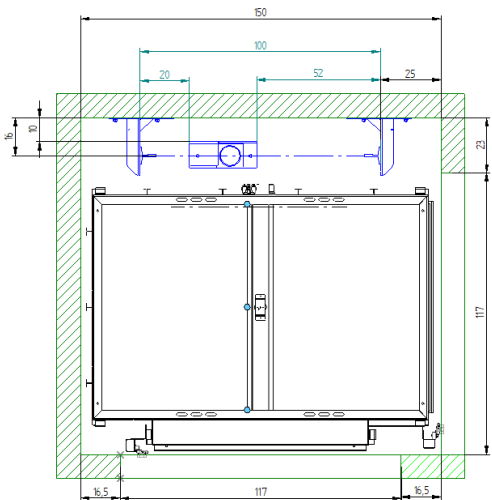
BONECAS DE PORTA LATERAL DIREITA/ESQUERDA
AC08 900X1400mm 180°



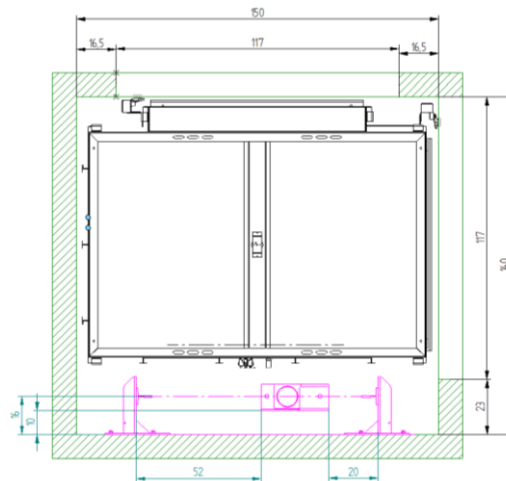
BONECAS DE PORTA LATERAL DIREITA
AC08 900X1400mm 360° LATERAL



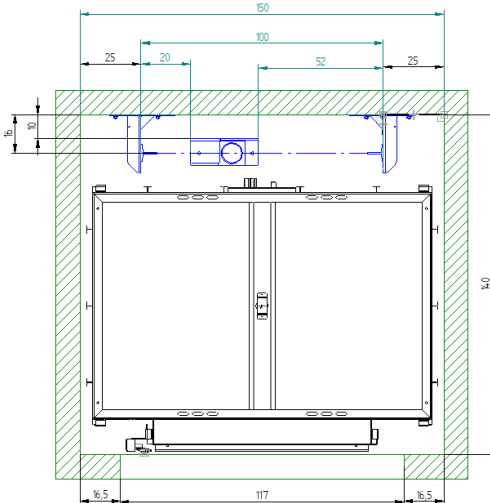
BONECAS DE PORTA LATERAL ESQUERDA
AC08 900X1400mm 360° LATERAL



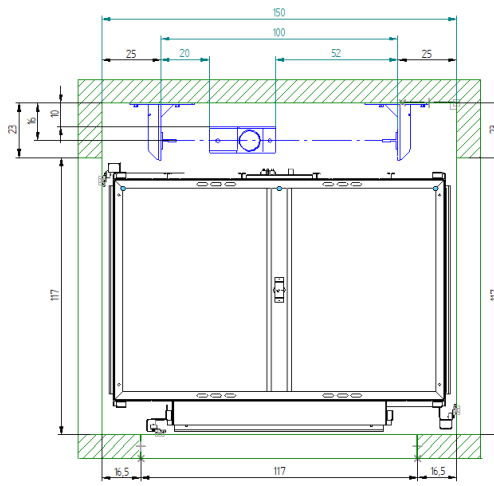
BONECAS DE PORTA LATERAL DIREITA E FRONTAL DIREITA/ESQUERDA
AC08 900X1400mm SAÍDA 90°



BONECAS DE PORTA LATERAL ESQUERDA E FRONTAL DIREITA/ESQUERDA
AC08 900X1400mm SAÍDA 90°

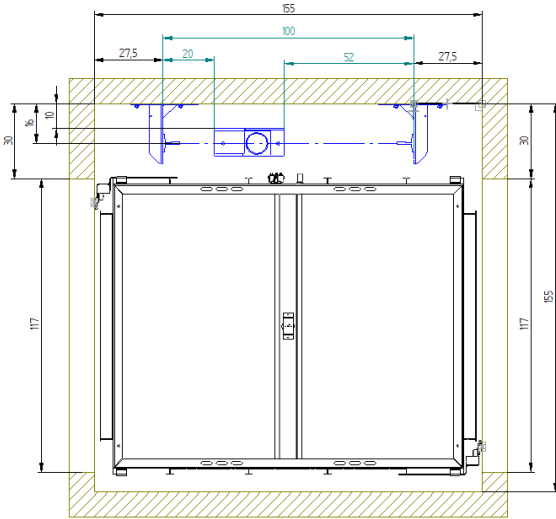


BONECAS DE PORTA FRONTAL DIREITA/ESQUERDA
AC08 900X1400mm SAÍDA 360° FRONTAL

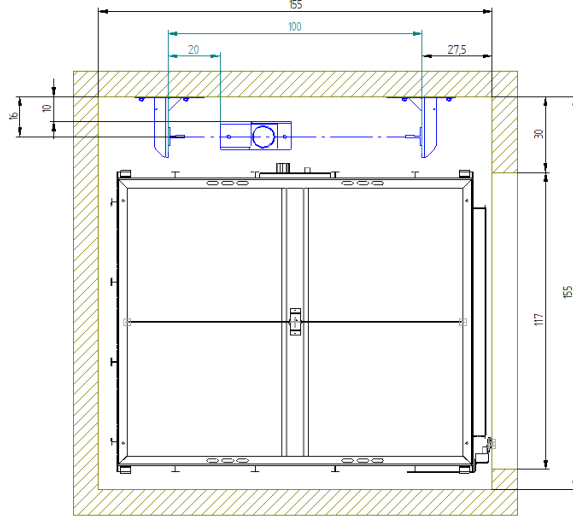


BONECAS DE PORTA FRONTAL DIREITA/ESQUERDA
AC08 900X1400mm SAÍDA EM T (3 SAÍDAS)

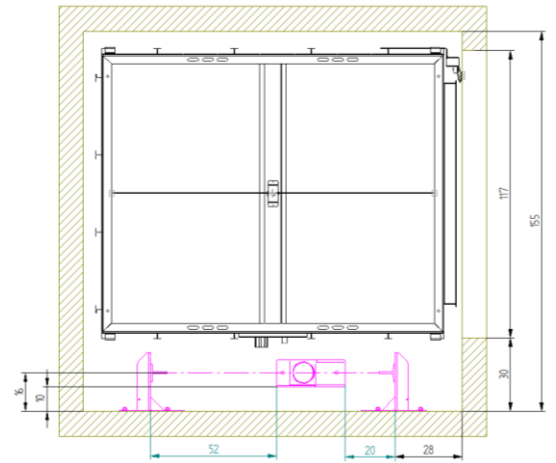
AC08 1100X1400mm



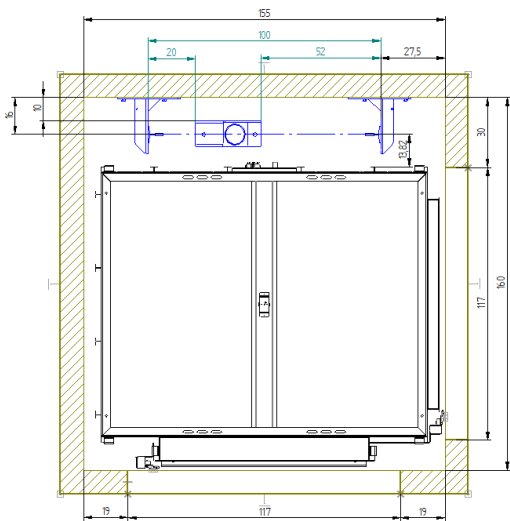
BONECAS DE PORTA LATERAL DIREITA/ESQUERDA
AC08 1100X1400mm SAÍDA 180°



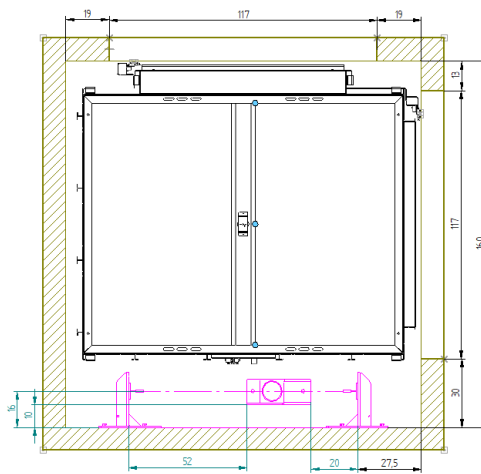
BONECAS DE PORTA LATERAL DIREITA
AC08 1100X1400mm 360° LATERAL



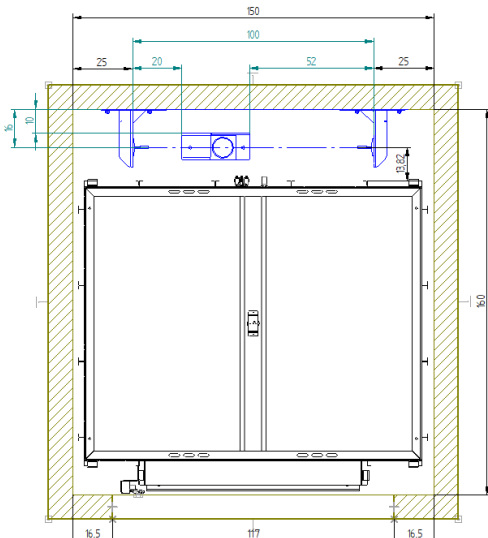
BONECAS DE PORTA LATERAL ESQUERDA
AC08 1100X1400mm 360° LATERAL



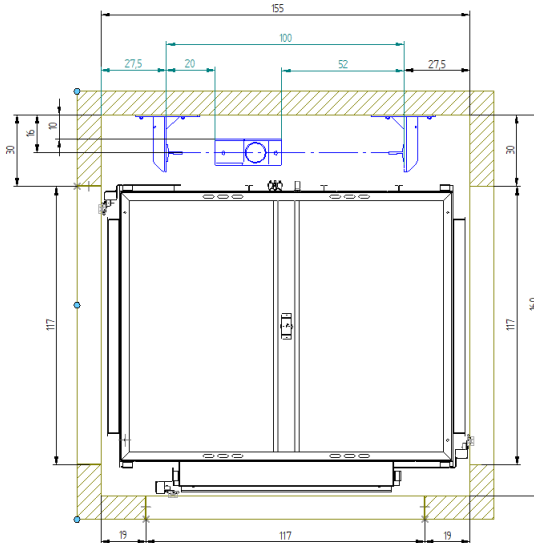
BONECAS DE PORTA LATERAL DIREITA E FRONTAL DIREITA/ESQUERDA
AC08 1100X1400mm 90°



BONECAS DE PORTA LATERAL ESQUERDA E FRONTAL DIREITA/ESQUERDA
AC08 1100X1400mm 90°

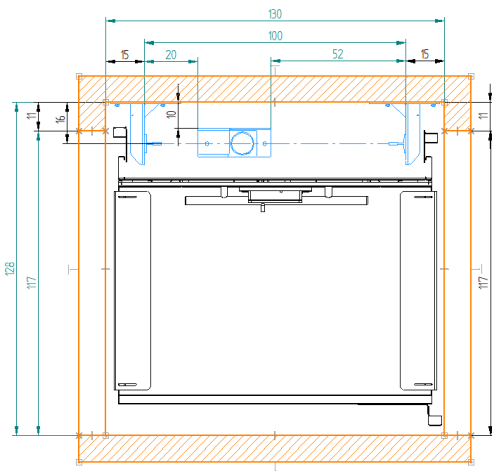


BONECAS DE PORTA FRONTAL DIREITA/ESQUERDA
AC08 1100X1400mm SAÍDA 360° FRONTAL

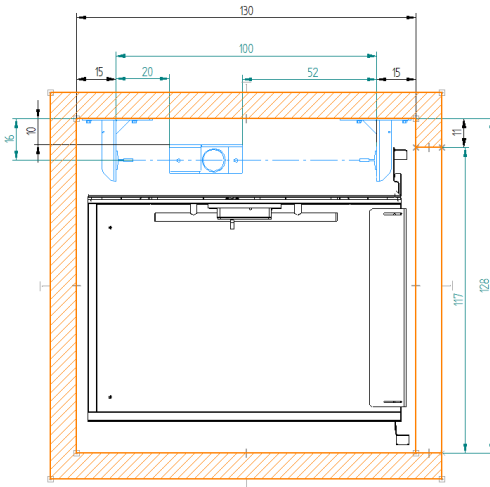


BONECAS DE PORTA FRONTAL DIREITA/ESQUERDA
AC08 1100X1400mm SAÍDA EM T (3 SAÍDAS)

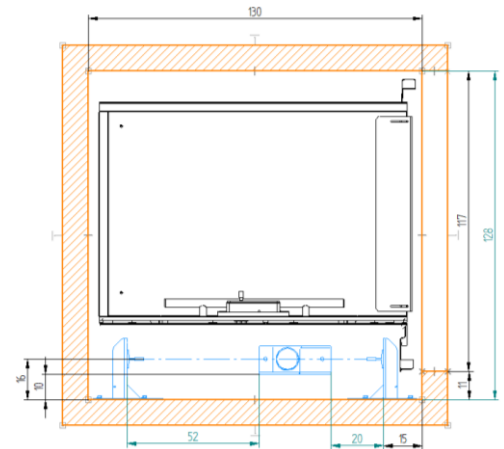
AC11 800X1200mm



BONECAS DE PORTA LATERAL DIREITA/ESQUERDA
AC11 800 x 1200 180°

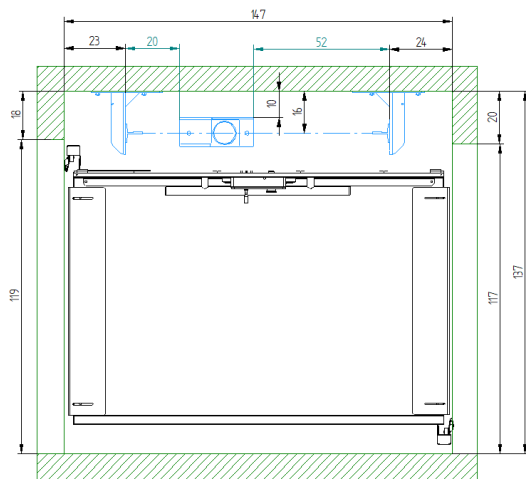


BONECAS DE PORTA LATERAL DIREITA
AC11 800 x 1200mm 360° LATERAL

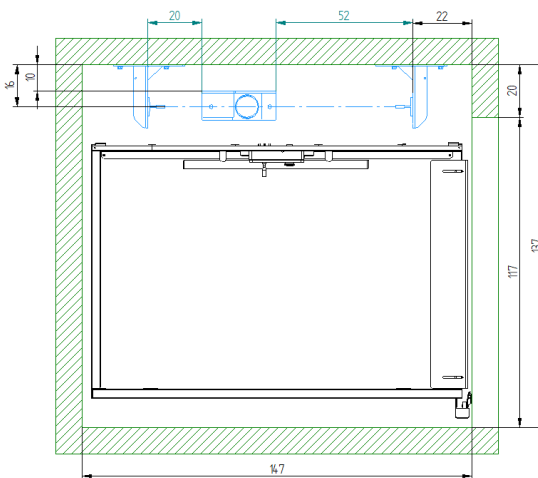


BONECAS DE PORTA LATERAL ESQUERDA
AC11 800 x 1200mm 360° LATERAL

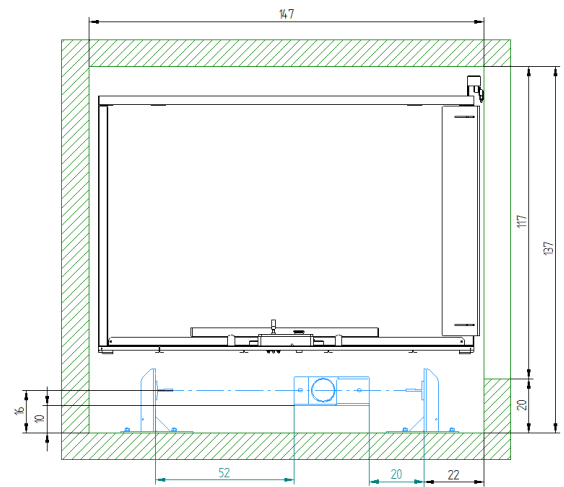
AC11 900X1400mm



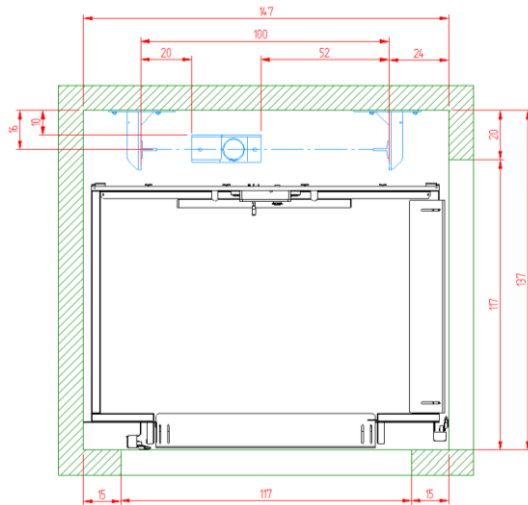
BONECAS DE PORTA LATERAL DIREITA/ESQUERDA
AC11 900x1400mm 180°



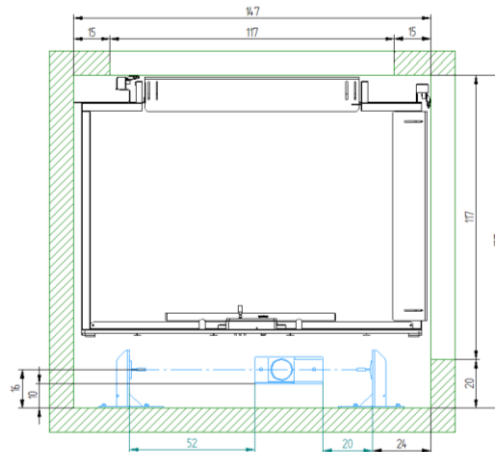
BONECAS DE PORTA LATERAL DIREITA
AC11 900x1400mm 360° LATERAL



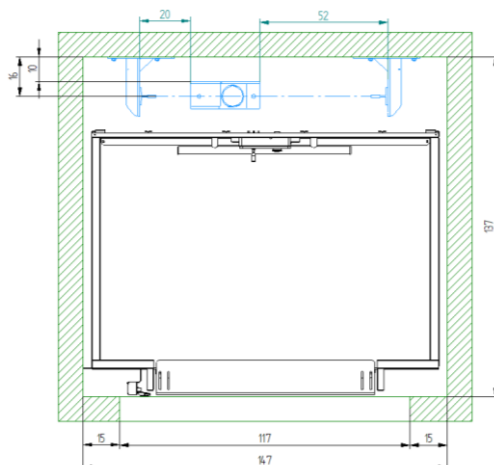
BONECAS DE PORTA LATERAL ESQUERDA
AC11 900x1400mm 360° LATERAL



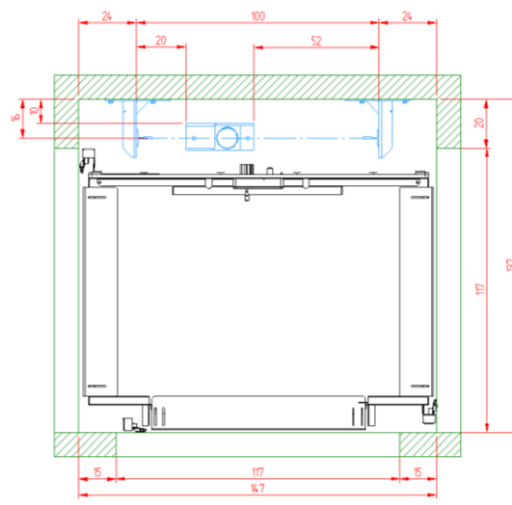
BONECAS DE PORTA LATERAL DIREITA E PORTA FRONTAL
DIREITA/ESQUERDA
AC11 900x1400mm 90°



BONECAS DE PORTA LATERAL ESQUERDA E PORTA FRONTAL
DIREITA/ESQUERDA
AC11 900x1400mm 90°

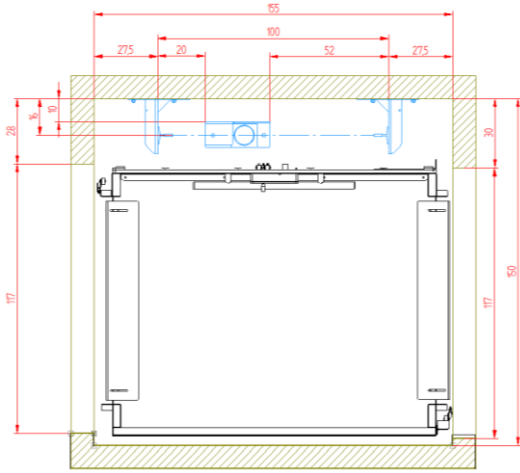


BONECAS DE PORTA FRONTAL DIREITA/ESQUERDA
AC11 900x1400mm 360° FRONTAL

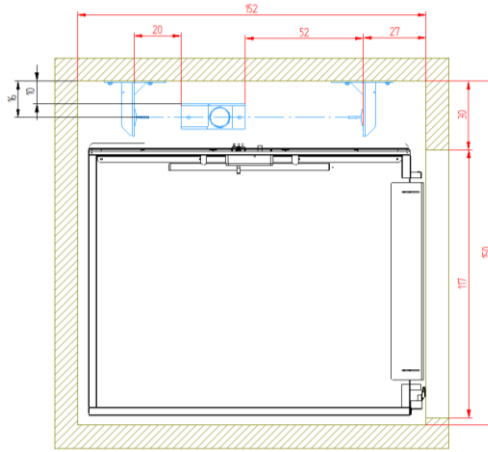


BONECAS DE PORTA LATERAL DIREITA/ESQUERDA
E PORTA FRONTAL DIREITA/ESQUERDA
AC11 900x1400mm 3 SAÍDAS EM T

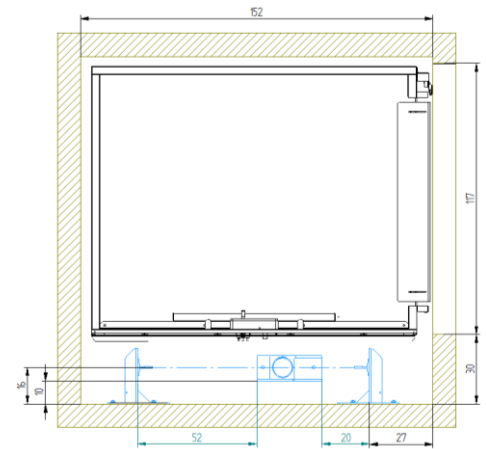
AC11 1100X1400mm



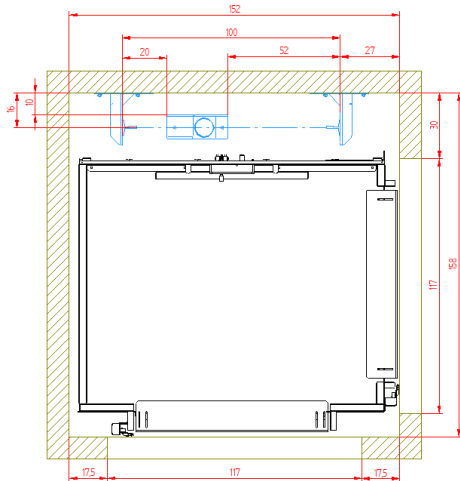
BONECAS DE PORTA LATERAL DIREITA/ESQUERDA
AC11 1100x1400mm 180°



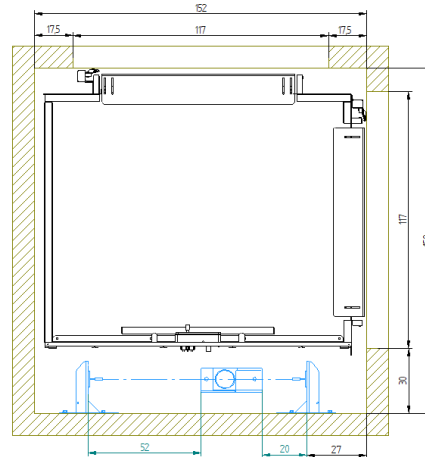
BONECAS DE PORTA LATERAL DIREITA
AC11 1100x1400mm 360° LATERAL



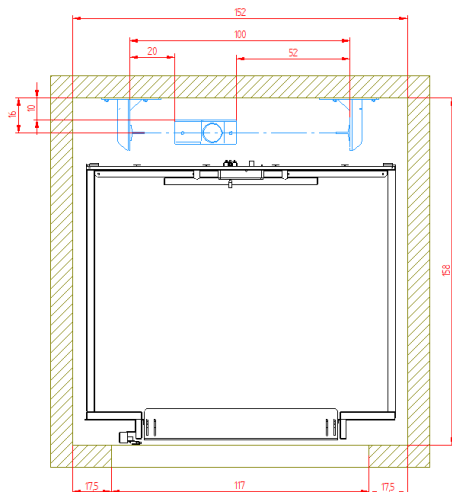
BONECAS DE PORTA LATERAL ESQUERDA
AC11 1100x1400mm 360° LATERAL



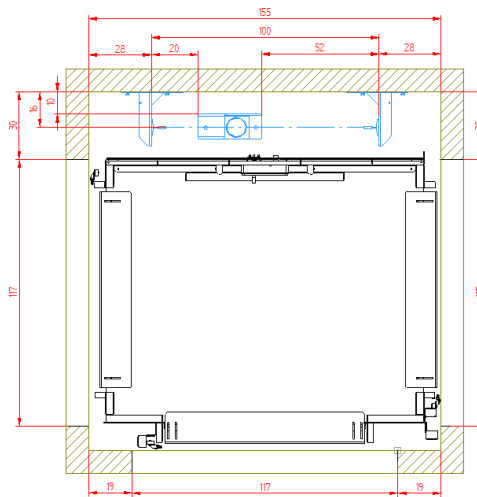
BONECAS DE PORTA LATERAL DIREITA E PORTA
FRONTAL DIREITA/ESQUERDA
AC11 1100x1400mm 90°



BONECAS DE PORTA LATERAL ESQUERDA E PORTA
FRONTAL DIREITA/ESQUERDA
AC11 1100x1400mm 90°



BONECAS DE PORTA FRONTAL DIREITA/ESQUERDA
AC11 1100x1400mm 360° FRONTAL

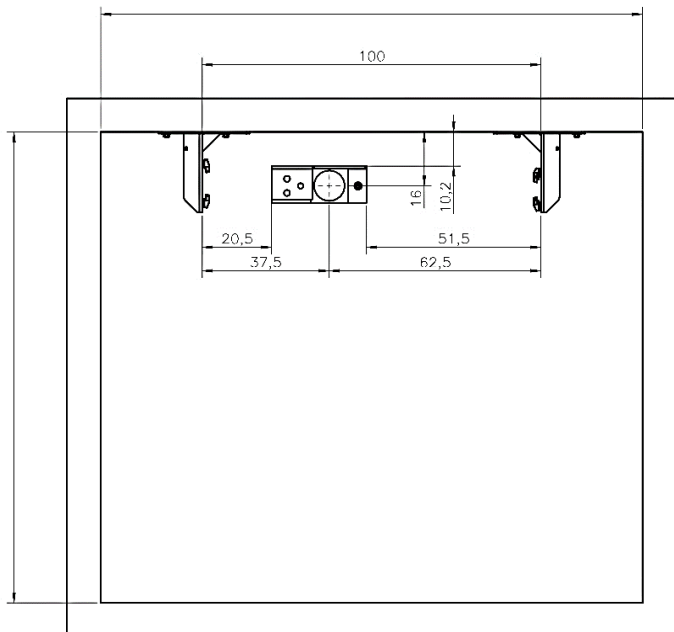


BONECAS DE PORTA LATERAL DIREITA/ESQUERDA
E PORTA FRONTAL DIREITA/ESQUERDA
AC11 1100x1400mm 3 SAÍDAS EM T

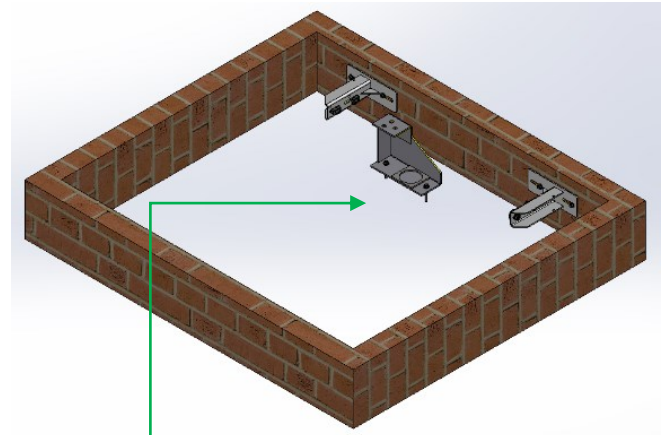
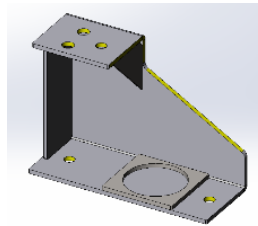
Caso tenha alguma dúvida consultar o suporte técnico:
telefone: (41) 9 9602 5503
e-mail: suporte@daikenelevadores.com.br

REV. 2.1 JUL/2024

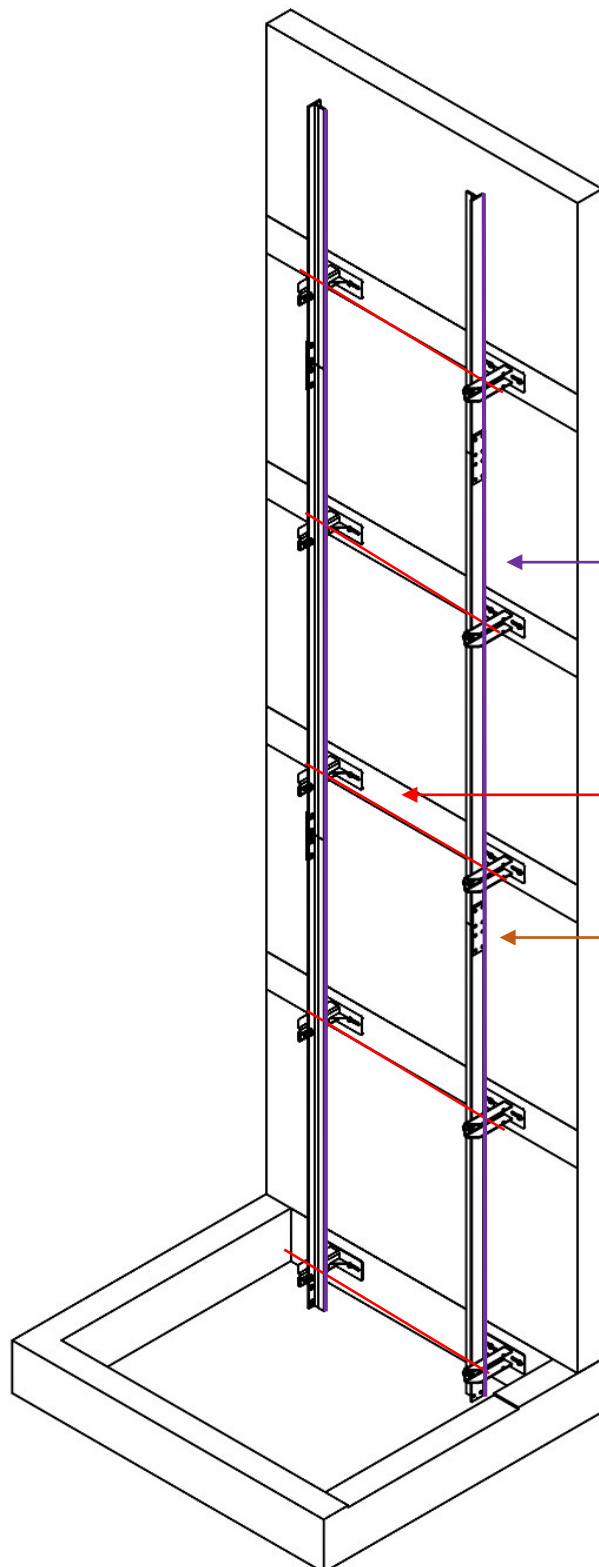
2° instalar a base do apoio do cilindro, (com atenção a distância entre braquetes). Inicialmente apenas posicionar o calço do cilindro no centro das guias conforme a seguir:



**BASE DO APOIO
CALÇO DO CILINDRO**



3° instalar demais braquetes e guias (a quantidade de braquetes poderá variar de acordo com o desnível da obra).



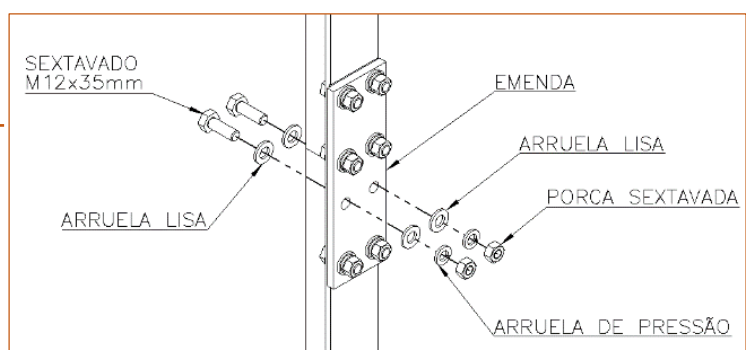
3.1 - Instalar as guias de um lado da torre, fazendo pré-aperto dos parafusos de fixação (braquetes e talas);

3.2 - Repetir o processo no lado oposto;

3.3 – Fazer aperto final garantindo a distância entre guias (100 cm) e o PRUMO das guias.

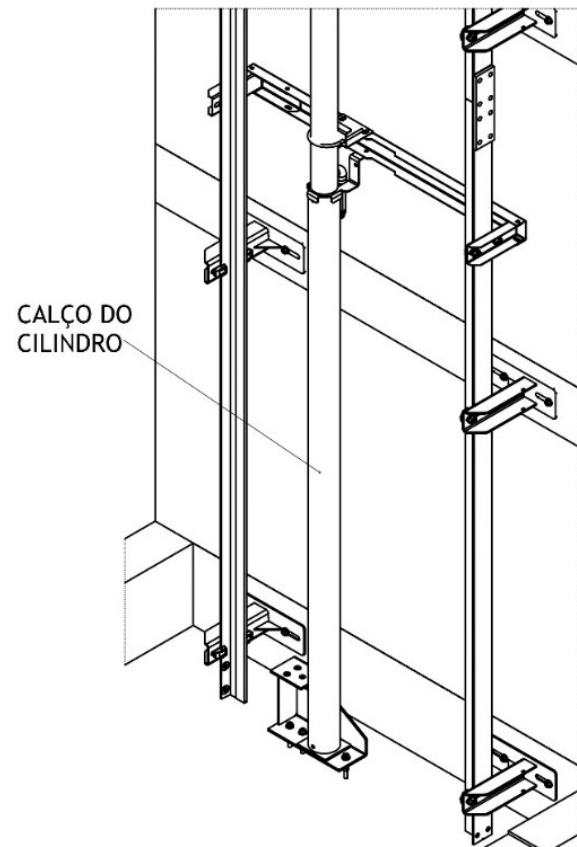
GUIAS T70

**IMPORTANTE!
DEVE SEMPRE POSICIONAR OS
BRAQUETES DE FORMA ALINHADA,
PARA MANTER AS DISTÂNCIAS E
ESPAÇAMENTO ENTRE ELES IGUAIS.**



FISH PLATE (TALA) (CÓD.58400R)

4° instalar tubo do calço do cilindro. O calço do cilindro é enviado com tamanho padrão (necessário cortar em obra de acordo com o desnível).

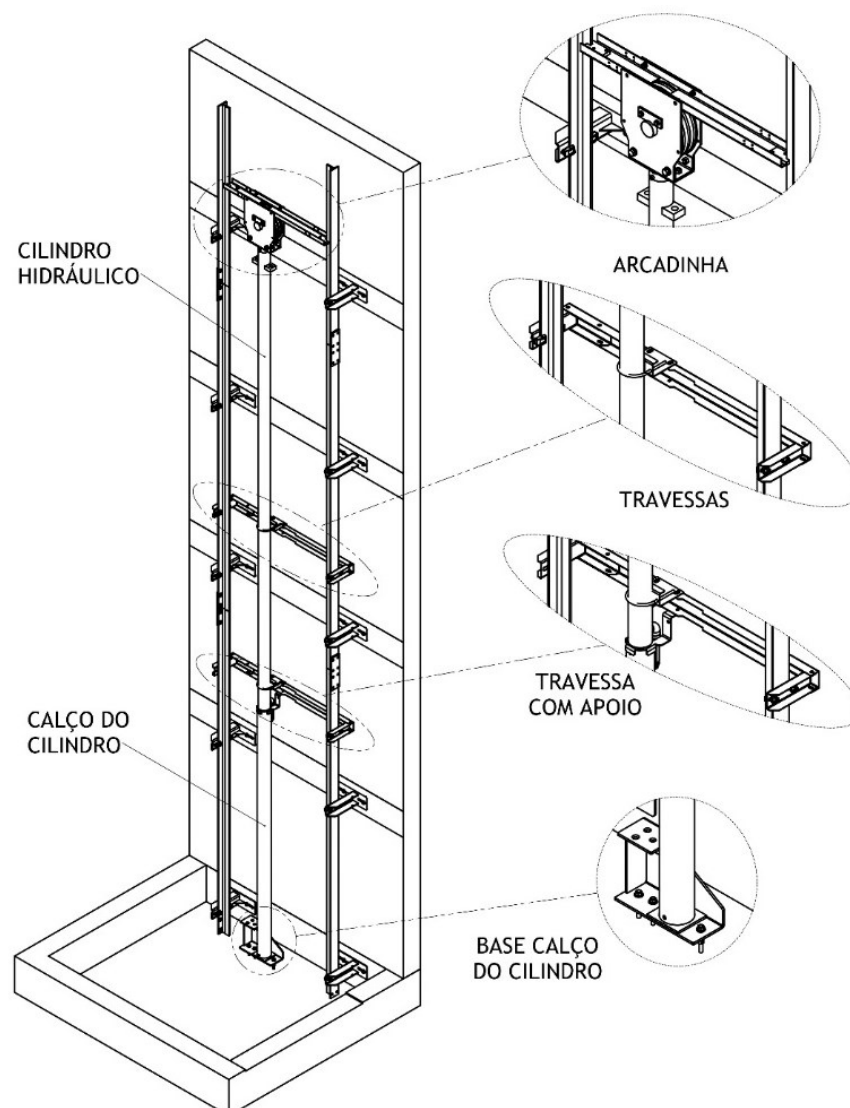


5° Posicionar travessas de fixação do calço do cilindro, Cilindro Hidráulico e Arcadinha.
Sequência de Instalação Recomendada:

1° Travessas;

2° Cilindro Hidráulico;

3° Arcadinha.



Caso tenha alguma dúvida
consultar o suporte técnico:
telefone: (41) 9 9602 5503
e-mail: suporte@daikenelevadores.com.br

REV. 2.1 JUL/2024